



# *Housing Authority of the City of Perth Amboy*

881 AMBOY AVENUE, P.O. BOX 390, PERTH AMBOY, NJ 08862  
TELEPHONE: (732) 826-3110  
FAX: (732) 826-3111

EDNA DOROTHY CARTY-DANIEL, Chairperson  
REVEREND GREGORY PABON, Vice-Chairman  
MIGUEL A. AROCHO  
SHIRLEY JONES  
REVEREND H. WAYNE BRADY  
PASTOR BERNADETTE FALCON-LOPEZ  
DAVID BENYOLA

DOUGLAS G. DZEMA, P.H.M.  
Executive Director

EDWARD TESTINO  
Counsel

May 10, 2017

## **RAD Improvements Senior Projects ADDENDUM #1**

1. Please be advised that Addendum #1 has been issued in response to questions asked by prospective bidders. All bidders are to refer to the attached BULLETIN NO. 1 (2 pages) prepared by the Authority engineer Clarke, Caton, Hintz to view all minor changes.
2. The bid opening date has been postponed to May 18, 2017 at 1:00 PM.
3. Bidders must acknowledge receipt of this Addendum #1 dated May 10, 2017 on the "Acknowledgement of Receipt of Addenda" form included in the original specifications.

All questions must be submitted in writing to [dsabey@PerthAmboyHA.org](mailto:dsabey@PerthAmboyHA.org).

Thank you.

**BULLETIN NO. 1**  
**Perth Amboy Housing Authority**  
**RAD Improvements Senior Projects**  
**May 10, 2017**  
**CCH Project # 1956**

---

**THIS BULLETIN NO. 1 IS BEING ISSUED TO ALL BIDDERS TO INFORM OF CERTAIN CLARIFICATIONS, CHANGES, DELETIONS, AND ADDITIONS WHICH HAVE BEEN MADE TO THE CONTRACT DOCUMENTS AND WHICH SHALL BE INCLUDED IN THE CONTRACT AND SHALL SUPERSEDE ANYTHING CALLED FOR PREVIOUSLY.**

---

**1.0 Changes to Project Drawings**

- a. Remove Hansen Drawing A-401 "Interior Elevations". Insert revised, attached Drawing A-401.

**2.0 RFI**

- a. **The following question, dated 4/20/2017, was received from Geraldine Milazzo-Rodriguez of Santorini Construction, Inc. (Santorini RFI 01):**

1. Typical across all buildings – Site Demo dwg indicates that the light pole and fixture are to be demo'd. Dwg E-001 shows a new typical light pole base/conduit detail. Is the contractor re-using the existing pole base/conduit, or are we to demo and install new pole base/conduit as per detail?

**Response: The contractor is to re-use the existing pole base and conduit at existing light poles being replaced.**

- b. **The following question, dated 5/05/2017, was received from Igor Borkin of Santorini Construction, Inc. (Santorini RFI 02):**

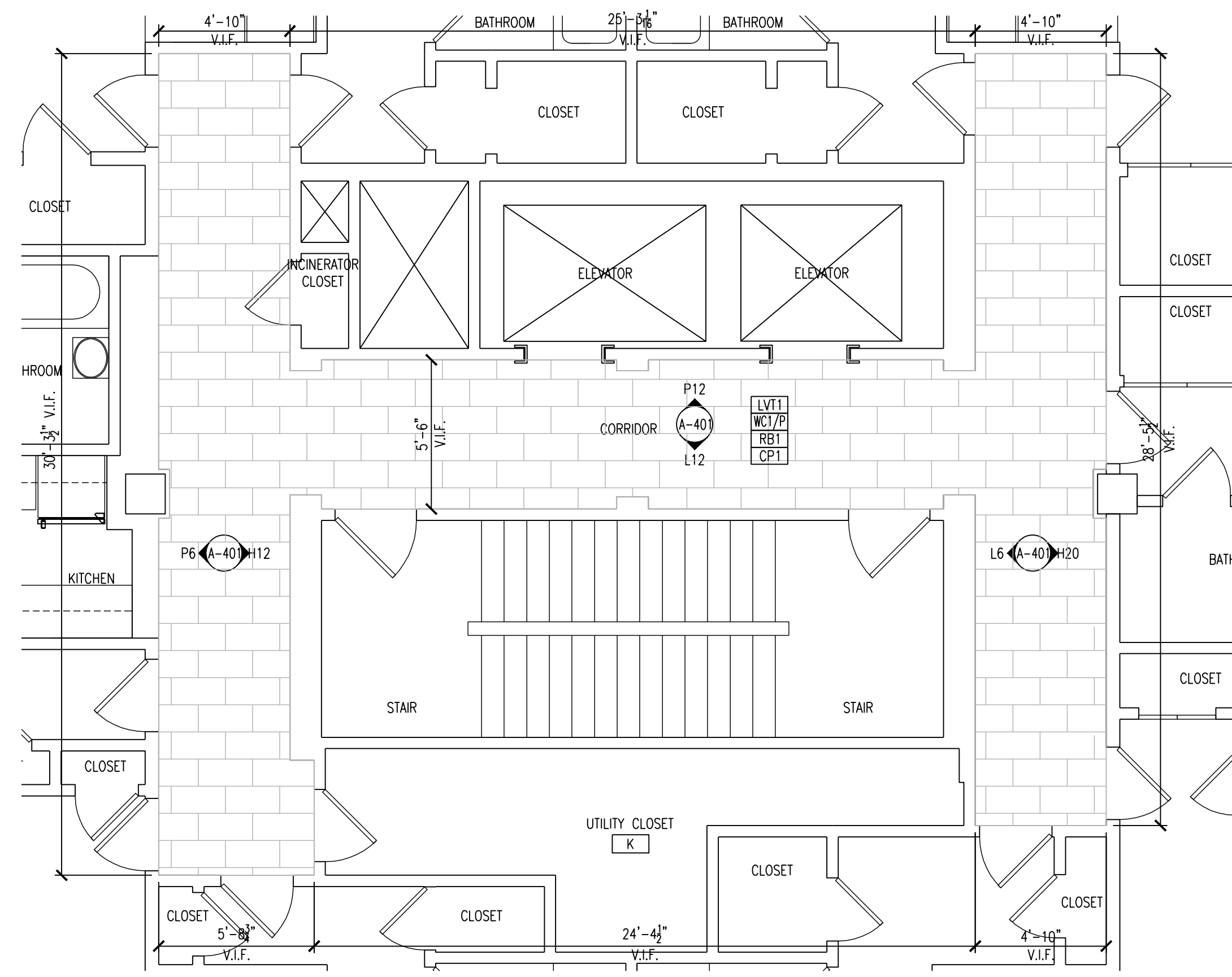
1. Hansen Drawings A-401, El. P12. Painting or wall covering?

**Response: On drawing E-401 of the Wesley T. Hansen project, the intent is to provide vinyl wall covering at all of the wall surfaces on the 2nd to 11th floors. The soffit / concrete beam located at the top perimeter of the walls are to be painted. See revised drawing A-401.**

**3.0 Miscellaneous Items**

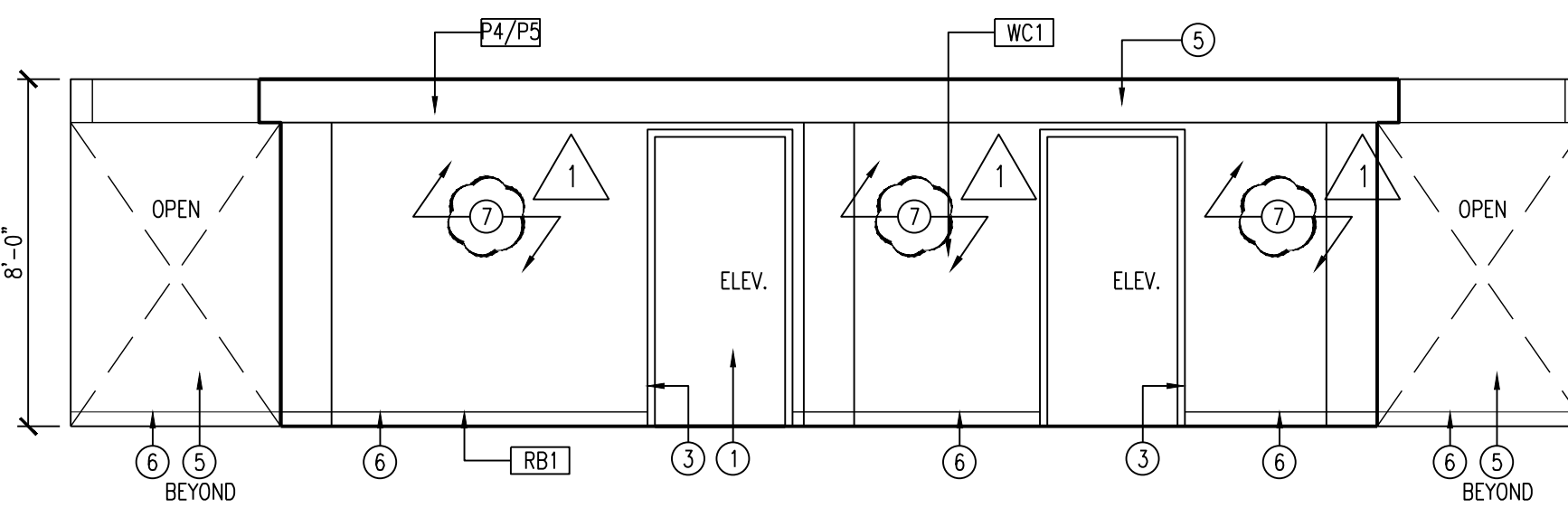
- a. **The bid due date for this project has been extended. The bid opening is now scheduled for 1:00 pm Thursday, May 18<sup>th</sup> at the Perth Amboy Housing Authority Office – 881 Amboy Ave, Perth Amboy, NJ 08861.**

**END OF BULLETIN #1**



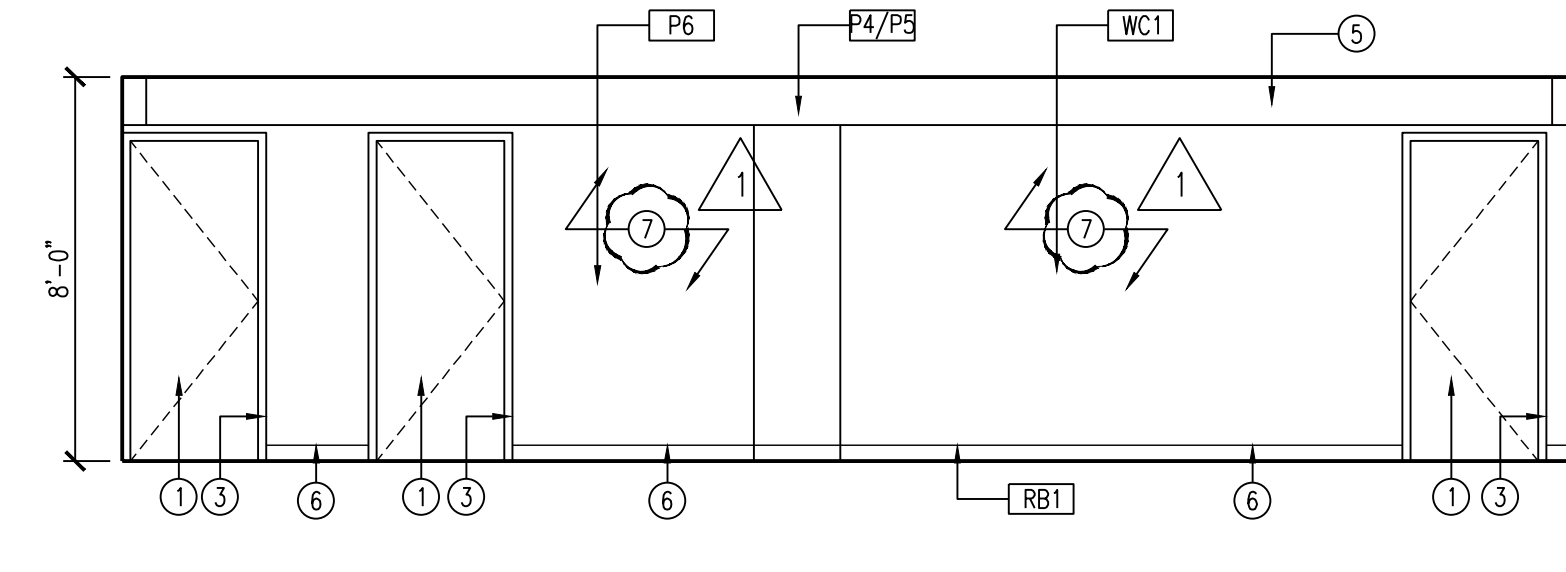
L20 PARTIAL PLAN

SCALE: 1/16" = 1'-0"



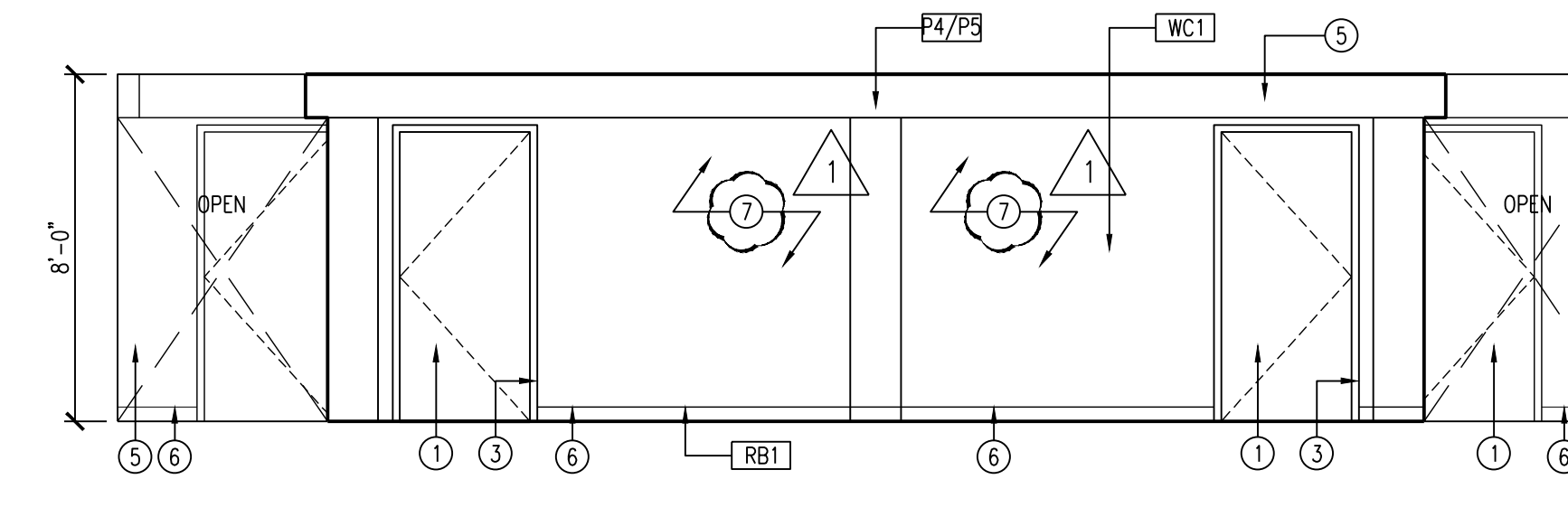
P12 INTERIOR CORRIDOR ELEVATION @ FLRS 2-11 TYP.

SCALE: 1/16" = 1'-0"



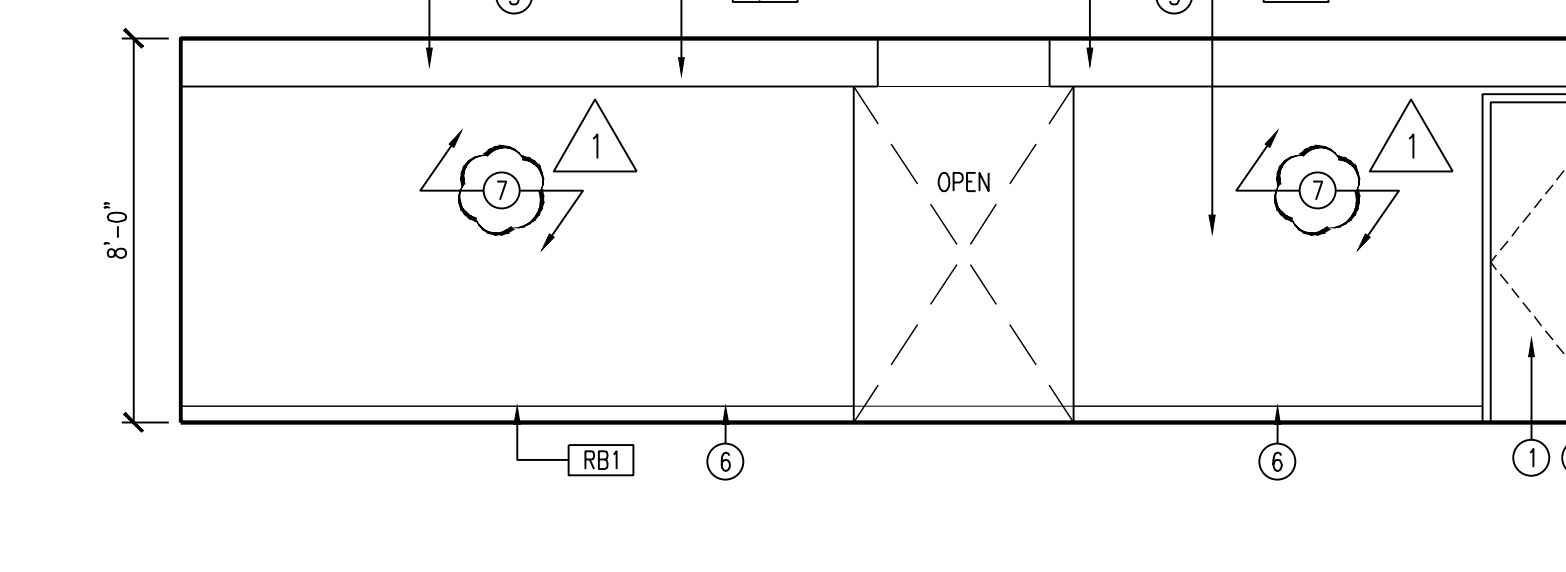
P6 INTERIOR CORRIDOR ELEVATION @ FLRS 2-11 TYP.

SCALE: 1/16" = 1'-0"



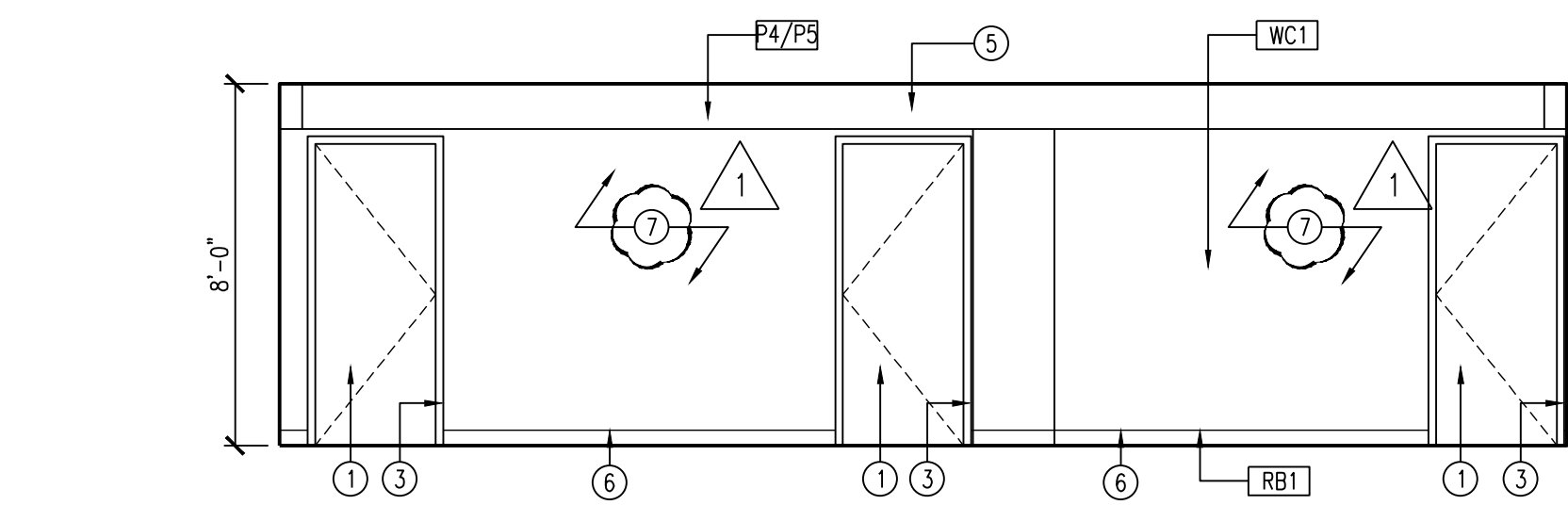
L12 INTERIOR CORRIDOR ELEVATION @ FLRS 2-11 TYP.

SCALE: 1/16" = 1'-0"



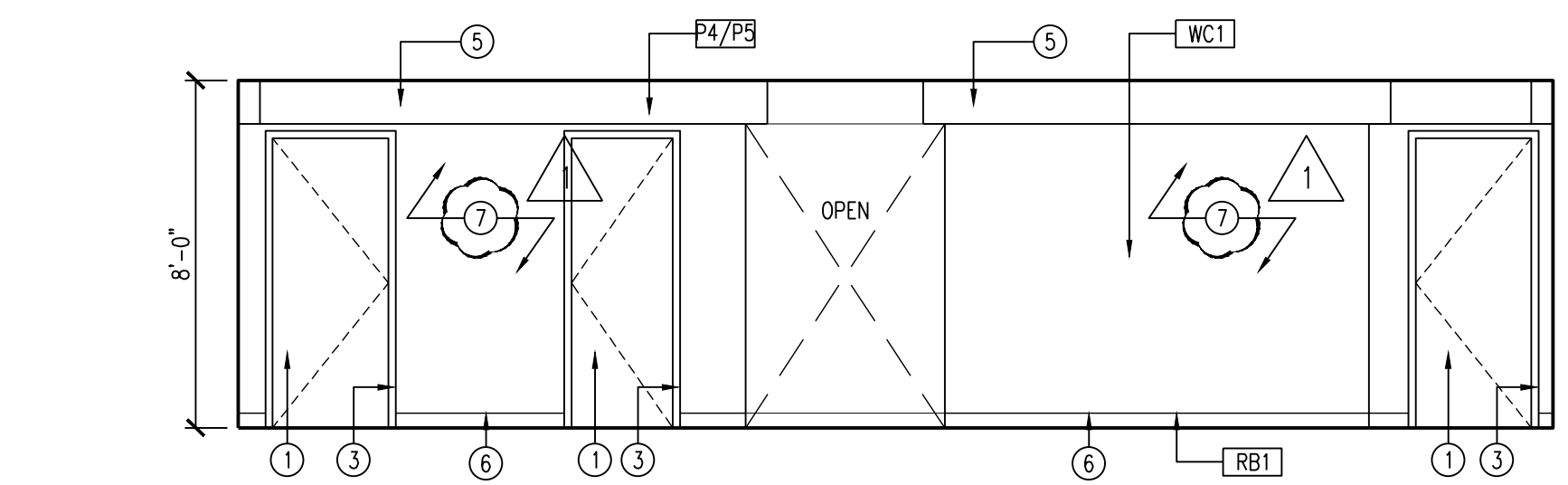
L6 INTERIOR CORRIDOR ELEVATION @ FLRS 2-11 TYP.

SCALE: 1/16" = 1'-0"



H20 INTERIOR CORRIDOR ELEVATION @ FLRS 2-11 TYP.

SCALE: 1/16" = 1'-0"



H12 INTERIOR CORRIDOR ELEVATION @ FLRS 2-11 TYP.

SCALE: 1/16" = 1'-0"

INTERIOR ELEVATION NOTES	
① EXISTING WOOD DOOR TO REMAIN	⑤ PAINT EXISTING WALL
② EXISTING TRASH CHUTE TO REMAIN. PAINT FRAME W/ SPECIALTY PAINT TO MATCH WALL.	⑥ PROVIDE NEW RUBBER BASE
③ CLAD EXISTING ELEVATOR HEAD AND JAMB W/ NEW STAINLESS STEEL, BRUSHED FINISH AT FLOORS 2-6.	⑦ PROVIDE NEW WALL COVERING
④ LIGHT FIXTURE/EXIT SIGN. REFER TO LIGHTING PLAN.	

GENERAL NOTES:  
1. PAINT ALL EXISTING EXPOSED CONDUIT AND WIREMOLD TO MATCH ADJACENT WALL COLOR.

H6 NOTES

INTERIOR FINISH SCHEDULE			
<b>CEILING FINISHES</b>	<b>MISCELLANEOUS</b>	<b>WALL FINISHES</b>	<b>WALL FINISHES CONT.</b>
CP1 = CEILING PAINT Manuf: SHERWIN-WILLIAMS Color: SW 7005 PURE WHITE Finish: FLAT Location: CORRIDORS AT HANSEN AND STACK	CHR1 = CHAIR RAIL Manuf: JOHNSONITE Style: RAMPART Color: CHR-49-C BEIGE Height: 4" Location: CORRIDORS AT STACK ABOVE GLAZED BLOCK	P1 = PAINT Manuf: SHERWIN-WILLIAMS Color: SW 7011 CASA BLANCA Finish: SATIN Location: APPLIED TO CONCRETE BLOCK AT STACK CORRIDORS ON ALL FLOORS	SP1 = SPECIALTY PAINT Manuf: ZOLATONE Style: LUMINATION Color: ZFX-02024 Location: APPLIED TO GLAZED BLOCK AT STACK CORRIDORS ON FLOORS 1, 3, AND 5
<b>FLOORING FINISHES</b>	CT1 = COUNTER TOP Manuf: RYNONE Style: CM1917 cultured marble vanity top with integral std oval bowl Grout: 18A WHITE ON BONE Size: 19 1/2" X 17"D	P2 = PAINT Manuf: SHERWIN-WILLIAMS Color: SW 7691 BALTIMORE BUFF Finish: EG-SHEL Location: KITCHENS AT STACK	SP2 = SPECIALTY PAINT Manuf: ZOLATONE Style: LUMINATION Color: ZFX-DB530 Location: APPLIED TO GLAZED BLOCK AT STACK CORRIDORS ON FLOORS 2, 4, AND 6
CT1 = CERAMIC TILE Manuf: DAL TILE Style: SANDALO Color: SW91 ACACIA BEIGE Size: 12" X 12" Grout: MAPEI FLEXCOLOR CQ Grout Joint: 3/16" Grout Color: 38 AVALANCHE Location: BATHROOMS AT STACK	FLM1 = PLASTIC LAMINATE Manuf: WILSONART Color: 4813-80 NICKEL EV Location: KITCHEN COUNTERTOPS AND BACKSPLASH AT STACK	P3 = PAINT Manuf: SHERWIN-WILLIAMS Color: SW 6219 RAIN Finish: EG-SHEL Location: BATHROOMS AT STACK AND DUNLAP	WCI = WALLCOVERING Manuf: COLOUR & DESIGN Style: OBAMA GLINT Color: CD2-OBG-12 SANDSTONE Location: CORRIDORS AT HANSEN ON ALL FLOORS
LV1 = LUXURY VINYL Manuf: ARMSTRONG Style: NATURAL CREATIONS EARTHCUTS Color: DELICATO NC530 OCHRE Size: 12" X 24" Location: CORRIDORS AT HANSEN AND STACK	SS1 = SOLID SURFACE Manuf: MEGANITE Color: BRIGHT WHITE 01A Location: BATHROOM WINDOWSILL AT STACK	P4 = PAINT Manuf: SHERWIN-WILLIAMS Color: SW 0022 PATCHWORK PLUM Finish: EG-SHEL Location: SOFFITS AT HANSEN CORRIDORS ON FLOORS 3, 5, 7, 9, AND 11	WT1 = WALL TILE Manuf: DAL TILE Style: LARGO Color: LRB-WHITE Size: 3" X 6" Grout: MAPEI FLEXCOLOR CQ Grout Joint: 3/16" Grout Color: 38 AVALANCHE Location: BATHROOMS AT STACK AND DUNLAP
LV2 = LUXURY VINYL Manuf: ARMSTRONG Style: NATURAL CREATIONS EARTHCUTS Color: ROCK SOLID TRIPS SANDSTONE Size: 18" X 18" Location: KITCHENS AT STACK	SS2 = SOLID SURFACE Manuf: MEGANITE Color: PORTLAND RAIN 744A Location: KITCHEN COUNTERTOPS AND BACKSPLASH (ALTERNATE) AT STACK	P5 = PAINT Manuf: SHERWIN-WILLIAMS Color: SW 7702 SPICED CIDER Finish: EG-SHEL Location: SOFFITS AT HANSEN CORRIDORS ON FLOORS 2, 4, 6, 8, AND 10	WT2 = WALL TILE Manuf: DAL TILE Style: LARGO Color: LRB-WHITE Size: 3" X 6" Grout: MAPEI FLEXCOLOR CQ Grout Joint: 3/16" Grout Color: 38 AVALANCHE Location: BATHROOMS AT STACK AND DUNLAP
<b>BASE FINISHES</b>	TR1 = TRANSITION Manuf: SCHULTER Style: REVEAL Color: MW-49-F6 BEIGE Height: 6" Location: CORRIDORS AT HANSEN AND STACK	P6 = PAINT Manuf: SHERWIN-WILLIAMS Color: SW 9112 SONG THRUSH Finish: SEMI-GLOSS Location: TRIM AND DOOR FRAMES AT HANSEN AND STACK CORRIDORS ON ALL FLOORS	
RB1 = RUBBER BASE Manuf: JOHNSONITE Style: REVEAL Color: MW-49-F6 BEIGE Height: 6" Location: CORRIDORS AT HANSEN AND STACK	TR2 = TRANSITION Manuf: JOHNSONITE Style: CTAXX-N Color: 49 BEIGE Location: KITCHENS AT STACK		
RB2 = RUBBER BASE Manuf: JOHNSONITE Style: RECESS Color: RWDC-49 BEIGE Height: 4.25" Location: KITCHENS AT STACK	TR3 = TRANSITION Manuf: JOHNSONITE Style: CTAXX-H Color: 45 SANDALWOOD Location: CORRIDORS TO APARTMENTS AND CORRIDORS TO FIRE STAIRS AT STACK		
	HR1 = HANDRAIL Manuf: ACRYDYN Style: HRB-4CN Color: 103 BEIGE Location: CORRIDORS AT HANSEN		

A6 INTERIOR FINISH SCHEDULE

100 Barrack Street  
Trenton, NJ 08608  
Tel: (609) 389-9393  
Fax: (609) 389-9344  
www.clarkecatonhintz.com

**Clarke Caton Hintz**  
Architecture  
Planning  
Landscape Architecture

OWNER:  
Housing Authority of the City of Perth Amboy  
881 Amboy Avenue, P.O. Box 390  
Perth Amboy, NJ 08862  
(732) 826-3110

MECHANICAL / PLUMBING:  
Keller & Gilgo Consulting Engineers  
14 Washington Road, Suite 221  
Princeton Junction, NJ 08550  
(609) 799-8336

ELECTRICAL:  
Keller & Gilgo Consulting Engineers  
14 Washington Road, Suite 221  
Princeton Junction, NJ 08550  
(609) 799-8336

SUBMISSIONS		
NO.	DATE	DESCRIPTION
1	11/15/16	OWNER/NAHMA REVIEW
2	3/22/17	ISSUED FOR BID
3	3/22/17	ISSUED FOR CONSTRUCTION

REVISIONS	
NO.	DESCRIPTION
1	5/10/17 BULLETIN #1

ARCHITECT  
WESLEY T. HANSEN  
NJ LICENSE NO. 21A01300200  
DATE: 3/22/2017

**WESLEY T. HANSEN**  
APARTMENT BUILDING  
REHAB AND SITE WORK  
415 FAYETTE STREET  
PERTH-AMBOY, NEW JERSEY 08862

DATE: 3/22/17

SCALE: 1/4" = 1'-0"

DRAWN BY: ER

CHECKED BY: SH, TR, MH

SHEET TITLE:  
INTERIOR  
ELEVATIONS

DRAWING NO.:

**A-401**

CCH PROJECT NO: 1956 BG1